

A MESSAGE FROM THE MAYOR OF LONDON

HELLO AND WELCOME TO LONDON!

If you're looking for fun things to do in our wonderful city this summer, here are a few ideas as we seek to expand access to culture and build a better London for everyone.

Following its stunning facelift, the National Portrait Gallery is a must see. From free storytelling sessions to photography workshops and creative hands-on activities, there are loads of opportunities to get creative! If you're in east London, check out the newly reopened Young V&A museum. Designed with children, for children and families, it's another fantastic free day out.

If you're a fan of all creatures great and small, London Zoo should be on your list. And there's a new exhibition 'The Secret Life of Reptiles and Amphibians' with 26 rarer species on show.

It would be remiss not to mention live theatre with 'As You Like It' at the historic Shakespeare's Globe on 18 August.

When the heat is on, help is at hand too.

On 20 August it's 'The Covent Garden Cool Down' with a mouth-watering 40 plus varieties of ice cream to try. I'm in.

The August Bank Holiday weekend brings the world-famous Notting Hill Carnival to west London's streets. If you've not been to this celebration of Caribbean culture and history before, you're in for a treat. It's the biggest street party on the planet!

If you prefer something more sedate, also on 26-28 August is the Battersea Park in Concert weekend, where the Royal Philharmonic Concert Orchestra will take centre stage.

Heading into autumn, London's leading festival of free outdoor theatre and performing arts, the Greenwich + Docklands International Festival, returns from 25 August to 10 September. It always offers a brilliant range of events to surprise and delight.

Finally, my current London Borough of Culture is Croydon in south London. It might be off the tourist map, but it's well worth a visit. This month there are guided tours of its new Music Heritage Trail,

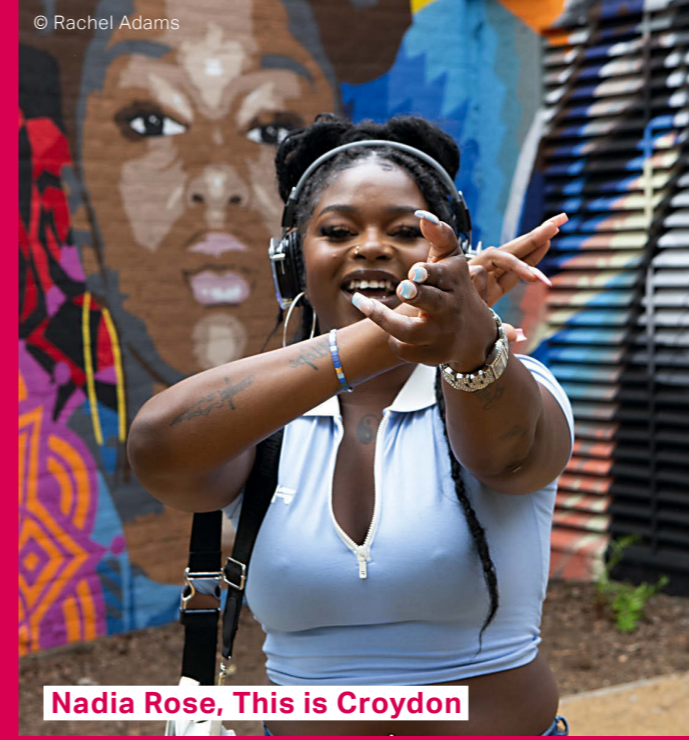


which celebrates the origins of punk, dubstep and grime, all of which have roots in Croydon. From Samuel Coleridge-Taylor to Stormzy, Croydon has a long and proud music heritage to discover.

London really does have something for everyone – showing once again why our city is the greatest in the world.

I hope you have an amazing time!

SADIQ KHAN,
Mayor of London



Nadia Rose, This is Croydon



Scenes on The Square

SOME AMAZING THINGS TO LOVE IN LONDON THIS SUMMER

Croydon – London Borough of Culture 2023

Croydon is the Mayor's London Borough of Culture for 2023. With a rich heritage, youthful energy, vibrant communities and over 120 green spaces – it's the place to be this summer! Come and explore the very best art, music, dance and theatre on offer, just 15 minutes from London Bridge.

Did you know Croydon has been home to musical talent including Samuel Coleridge-Taylor through to Kirsty MacColl, Nadia Rose and Stormzy? Find out more by following the new Croydon Music Heritage Trail. Download the app and start your journey at The Queen's Gardens.

Don't miss Liberty Festival, 1-3 September – a free celebration of innovative and ambitious work by D/ deaf, disabled and neurodiverse artists, curated by Drunken Chorus.

There's so much more! Visit www.culturecroydon.com for the lowdown.

Planet Summer, until 21 September

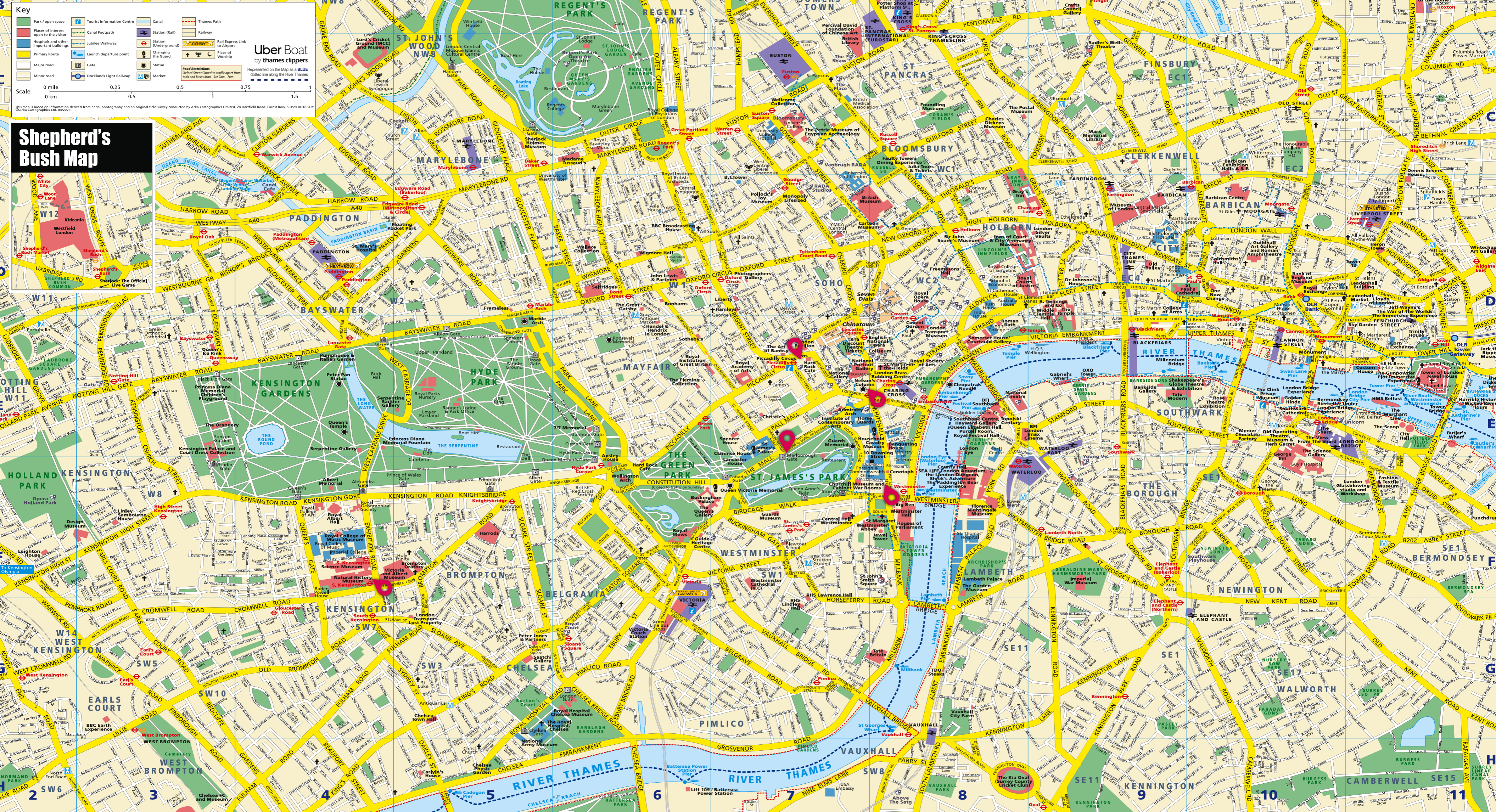
Find care, hope, connection and activism in the Southbank Centre's season of Culture for 2023. With a rich heritage, youthful energy, vibrant communities and over 120 green spaces – it's the place to be this summer! Come and explore the very best art, music, dance and theatre on offer, just 15 minutes from London Bridge.

Scenes on the Square

If you love films, check out this free interactive trail of statues of icons from a century of cinema in the heart of Leicester Square. Featuring well known classic and contemporary characters, including Harry Potter, Paddington Bear, Mr Bean and the newest edition, Indiana Jones. Each immortalised in interactive and expressive bronze statues, with some brought to life in the evening through lighting.

#LetsDoLondon

Central London



Street Index

Albany Street, NW1	B6/C6	Birdcage Walk, SW1	F7	Carnaby Street, W1	D7/E7	Downing Street, SW1	F7/F8	Goodge Street, W1	D7	Holland Park Avenue, W11	E2	Lincoln's Inn Fields, WC2	D8	New Oxford Street, WC1	D7/D8	Park Street, W1	E6	Shaftesbury Avenue, W1	D7/D8/E7	Trafalgar Square, WC2, SW1	E7/E8
Bloomsbury Street, WC1	E9	Blackfriars Bridge, SE1, EC4	D9	Charing Cross Road, WC2	D7/E7	Drury Lane, WC2	D8	Gower Street, WC1	C7/D7	Horse Guards Road, SW1	E7/F7	North Audley Street, W1	D9/D10	Newgate Street, EC1	D9/D10	Piccadilly, W1	F6/E6/E7	Sloane Avenue, SW3	E5	Upper Brook Street, W1	E6
Bloomsbury Way, WC1	D8	Bloomsbury Way, WC1	D8	Charing Cross Road, WC2	D7/E7	Charing Cross Road, WC2	D7/E7	Gray's Inn Road, WC1	C8/D9	Jermyn Street, SW1	E7	Northumberland Avenue, WC2	D6/E6	North Audley Street, W1	D6/E6	Portland Place, W1	C6/D6	Sloane Square, SW1	G5/G6	Upper Grosvenor Street, W1	E6
Brompton Road, SW3, SW1	F5/G5	Bromley Road, SW1	D7	Charles Street, W1	E6	Ebury Street, SW1	F6/G6	Great Portland Street, W1	C6/D6/D7	Kensington Church Street, W8	E3/F3	Notting Hill Gate, W11	E3	Northumberland Avenue, WC2	E8	Portman Square, W1	D5/D6	Sloane Street, SW1	F5/G5	Vauxhall Bridge, SW1, SE1	G8
Brewer Street, W1	E6	Brook Street, W1	E7	Chapel Street, W1	D10	Eccleston Street, SW1	F6/G6	Great Russell Street, WC1	D7/D8	Kensington Gore, SW7	F4	Portman Square, W1	D5/D6	Notting Hill Gate, W11	E3	Princes Square, W1	D5/D6	Soho Square, W1	D7	Vauxhall Bridge, SW1	G7
Bruton Street, W1	E6	Bruton Street, W1	E6	Chapel Street, W1	D10	Edgware Road, W2	C4/D4/D5	Greysteel Place, SW1	D7	Kensington High Street, W8	F2/F3	Portman Square, W1	D5/D6	Notting Hill Gate, W11	E3	Princes Square, W1	D5/D6	Soho Square, W1	D7	Vauxhall Bridge, SW1	G7
Bryanston Square, W1	D5	Bruton Street, W1	E6	Chapel Street, W1	D10	Euston Road, NW1	C7/C8	Grosvenor Place, SW1	F7	Kensington Park Road, W11	E2/E3	Portman Square, W1	D5/D6	Notting Hill Gate, W11	E3	Princes Square, W1	D5/D6	Soho Square, W1	D7	Vauxhall Bridge, SW1	G7
Bryantston Square, W1	D5	Bruton Street, W1	E6	Chapel Street, W1	D10	Euston Road, NW1	C7/C8	Grosvenor Place, SW1	F7	Kensington Park Road, W11	E2/E3	Portman Square, W1	D5/D6	Notting Hill Gate, W11	E3	Princes Square, W1	D5/D6	Soho Square, W1	D7	Vauxhall Bridge, SW1	G7
Buckingham Gate, SW1	D7	Bruton Street, W1	E6	Chapel Street, W1	D10	Euston Road, NW1	C7/C8	Grosvenor Place, SW1	F7	Kensington Park Road, W11	E2/E3	Portman Square, W1	D5/D6	Notting Hill Gate, W11	E3	Princes Square, W1	D5/D6	Soho Square, W1	D7	Vauxhall Bridge, SW1	G7
Buckingham Palace, SW1	F6/G6	Bruton Street, W1	E6	Chapel Street, W1	D10	Euston Road, NW1	C7/C8	Grosvenor Place, SW1	F7	Kensington Park Road, W11	E2/E3	Portman Square, W1	D5/D6	Notting Hill Gate, W11	E3	Princes Square, W1	D5/D6	Soho Square, W1	D7	Vauxhall Bridge, SW1	G7
Burlington Arcade, W1	E7	Bruton Street, W1	E6	Chapel Street, W1	D10	Euston Road, NW1	C7/C8	Grosvenor Place, SW1	F7	Kensington Park Road, W11	E2/E3	Portman Square, W1	D5/D6	Notting Hill Gate, W11	E3	Princes Square, W1	D5/D6	Soho Square, W1	D7	Vauxhall Bridge, SW1	G7
Bury Street, SW1	E7	Bruton Street, W1	E6	Chapel Street, W1	D10	Euston Road, NW1	C7/C8	Grosvenor Place, SW1	F7	Kensington Park Road, W11	E2/E3	Portman Square, W1	D5/D6	Notting Hill Gate, W11	E3	Princes Square, W1	D5/D6	Soho Square, W1	D7	Vauxhall Bridge, SW1	G7
Belgrave Square, SW1	F6	Bruton Street, W1	E6	Chapel Street, W1	D10	Euston Road, NW1	C7/C8	Grosvenor Place, SW1	F7	Kensington Park Road, W11	E2/E3	Portman Square, W1	D5/D6	Notting Hill Gate, W11	E3	Princes Square, W1	D5/D6	Soho Square, W1	D7	Vauxhall Bridge, SW1	G7
Berkeley Square, W1	E6	Bruton Street, W1	E6	Chapel Street, W1	D10	Euston Road, NW1	C7/C8	Grosvenor Place, SW1	F7	Kensington Park Road, W11	E2/E3	Portman Square, W1	D5/D6	Notting Hill Gate, W11	E3	Princes Square, W1	D5/D6	Soho Square, W1	D7	Vauxhall Bridge, SW1	G7
Berkeley Street, W1	E6	Bruton Street, W1	E6	Chapel Street, W1	D10	Euston Road, NW1	C7/C8	Grosvenor Place, SW1	F7	Kensington Park Road, W11	E2/E3	Portman Square, W1	D5/D6	Notting Hill Gate, W11	E3	Princes Square, W1	D5/D6	Soho Square, W1	D7	Vauxhall Bridge, SW1	G7

TEAM LONDON AMBASSADORS

The Team London Ambassadors are volunteers who give their time to welcoming visitors to London. They've been sharing their knowledge and enthusiasm for the capital since 2012.

You can find Ambassadors this summer at:

- Exhibition Road
- Greenwich
- Parliament Square
- Piccadilly Circus
- St James's Park
- Trafalgar Square

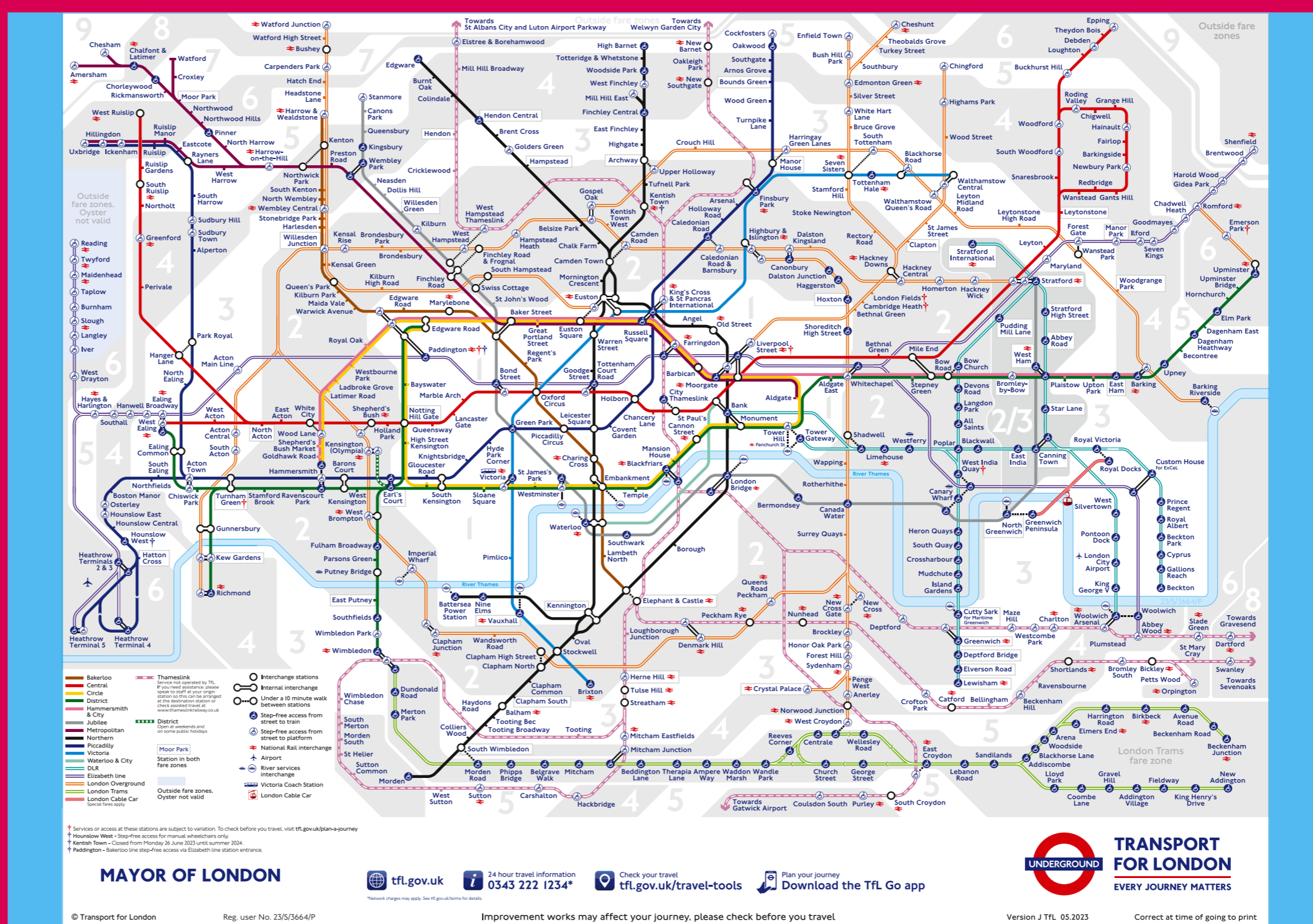
Find the locations on the maps

YOUR OPINION COUNTS

We'd love to hear your feedback on the Ambassadors, please complete our short survey at www.london.gov.uk/team-london-ambassadors-visitor-feedback

WANT TO VOLUNTEER WITH US?

If you want to volunteer with the Ambassador programme or support Major Events in the city throughout the year, email the team on majorevents@london.gov.uk



MAYOR OF LONDON

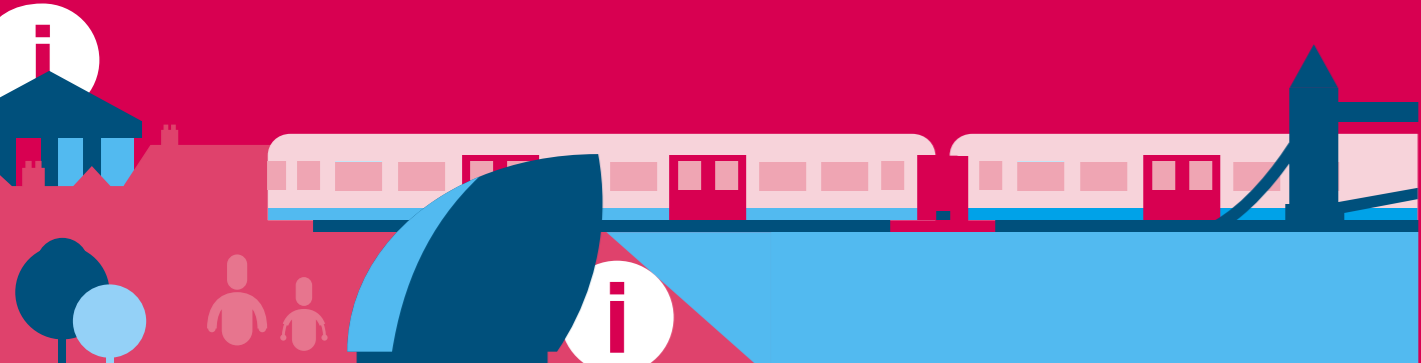


TEAM LONDON AMBASSADORS

City Map

london.gov.uk/volunteer

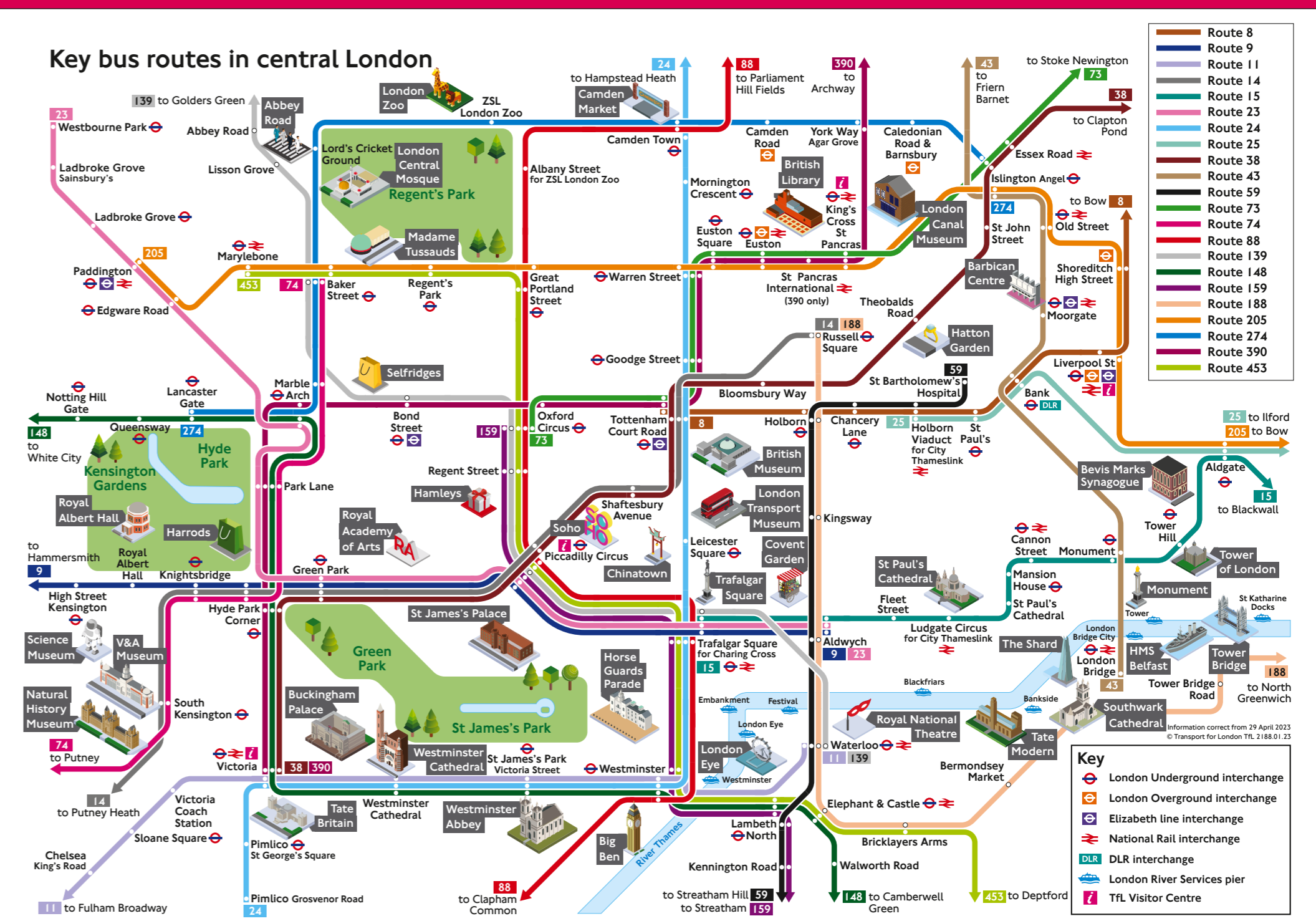
brought to you by **where MAPS**



West End/Theatreland Index



KEY TO THEATRES		KEY TO DANCE AND MUSIC VENUES	
1	100 Club	51	100 Club
2	Above The Stag	52	Alexandra Palace
3	Aldwych	53	Cardigan Hall
4	Almeida Theatre	54	Kings Place
5	Arts	55	Koko
6	Apollo Theatre	56	London Coliseum
7	Arts	57	02 Shepherd's Bush Empire
8	Cambridge	58	Lyric Theatre
9	Criterion	59	Romney Scott's
10	Arts	60	Royal Albert Hall
11	Donmar Warehouse	61	Royal Opera House
12	Duchess	62	Southbank Centre
13	Duke of York's	63	St James's Piccadilly Church
14	Fortune	64	St John's Smith Square
15	Garrick	65	St Martin-in-the-Fields Church
16	Harold Pinter Theatre	66	Sadler's Wells
17	Harold Pinter Theatre	67	The 02
18	London Palladium	68	Wigmore Hall
19	London Palladium		
20	London Palladium		
21	London Palladium		
22	London Palladium		
23	London Palladium		
24	London Palladium		
25	London Palladium		
26	London Palladium		
27	London Palladium		
28	London Palladium		
29	London Palladium		
30	London Palladium		
31	London Palladium		
32	London Palladium		
33	London Palladium		
34	London Palladium		
35	London Palladium		
36	London Palladium		
37	Royal Court		
38	St Martin's		
39	Savoy		
40	Shaftesbury		
41	Shakespeare's Globe		
42	Sondheim Theatre		
43	Southwark Playhouse		
44	Theatre Royal Drury Lane		
45	Theatre Royal Haymarket		
46	The Other Place		
47	Trafalgar Studios		
48	Victoria Palace		
49	Victoria Palace		
50	Wyndham's		



Docklands/Greenwich



MORE FREE FAMILY FUN ACTIVITIES



Sculpture in the City
London's annual exhibition of contemporary art in the City of London returns with its most global and diverse offer to date. Artists include Phyllida Barlow, Isamu Noguchi, Larry Bell as well as Simeon Barclay, Rafael D'Aló, Vanessa da Silva and many others. The free outdoor exhibition also includes a programme of free events and educational activities. Download the free Bloomberg Connects art app to explore the sculptures in more detail.

Young V&A
Come and spark your creativity at Young V&A – the museum where children, young people and families can

imagine, play and design together. Be inspired by objects, spaces, explore the collection and get creative. Free for all.

City of London family activities
The 'Square Mile' is the oldest part of London and famous for its ancient buildings as much as its spectacular skyscrapers. Every second Saturday at the Guildhall Gallery this summer you can enjoy free family activities inspired by the exhibitions and artworks on display. Until 20 August, enjoy an accessible art experience, discovering brightly painted giant Morph sculptures in stunning locations around the City and other London areas. On 25 and 26 August, you can go back in time to Roman Londinium

on a fun interactive family quest at the London Mithraeum Bloomberg SPACE and London's Roman Amphitheatre.

London Transport Museum
Go on a Green Journey this summer at the London Transport Museum and explore the role of transport in creating a sustainable city. Family workshops are taking place throughout August where you can create your own set of Family Action Cards and your very own climate change superhero.

National Portrait Gallery Summer Family Festival, August
Enjoy a free family friendly programme of events and activities inspired by the National Portrait Gallery's collection. From storytelling in the galleries, to photography workshops and creative hands-on activities, there will be lots to make and do!
Keep a look out on our website where the full programme will be announced soon. All activities are drop in, first come first served. Capacity limited.

Notting Hill Carnival
From 27 August 2023 to 28 August 2023
The world-famous annual celebration



of Caribbean culture has been running since 1966. Starting small, today, it attracts over one million visitors across the weekend. With over 30 sound systems, 50,000 performers in the parade, 300 food stalls galore, it's the largest street event in Europe.

Greenwich+Docklands International Festival
Fri, 25 Aug 2023 to Sun, 10 Sept 2023
London's leading festival of free outdoor theatre and performing arts. A highlight is the premiere of *The Architect*, an immersive theatrical journey through time and a city conceived by Mojisola Adebayo, Roy Williams and Matthew Xia. It was created with a collective of leading Black artists including Bola Agbaje, Dexter Flanders, Vanessa Macauley and XANA.